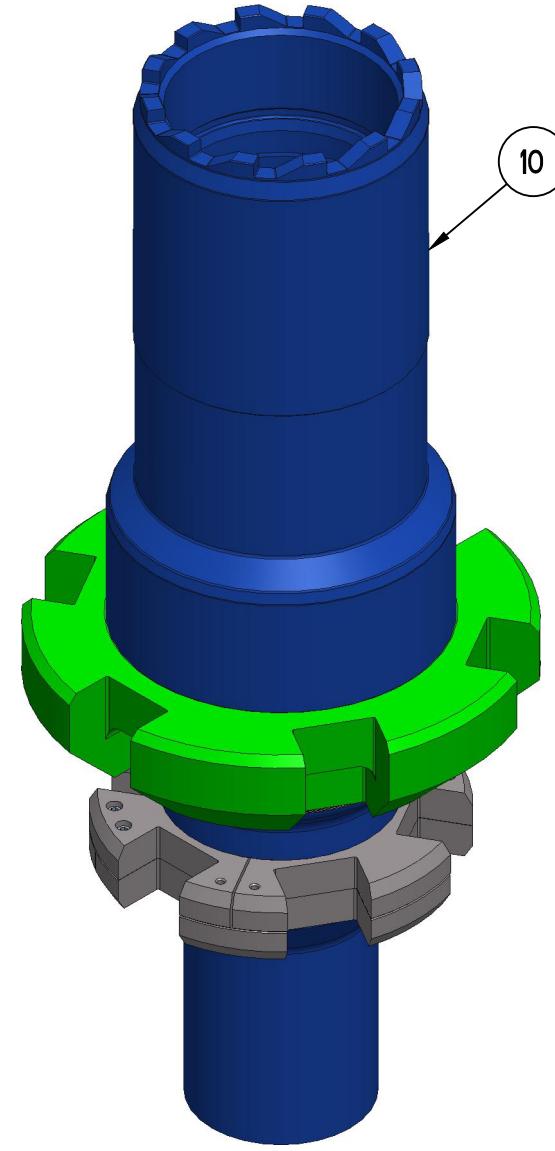
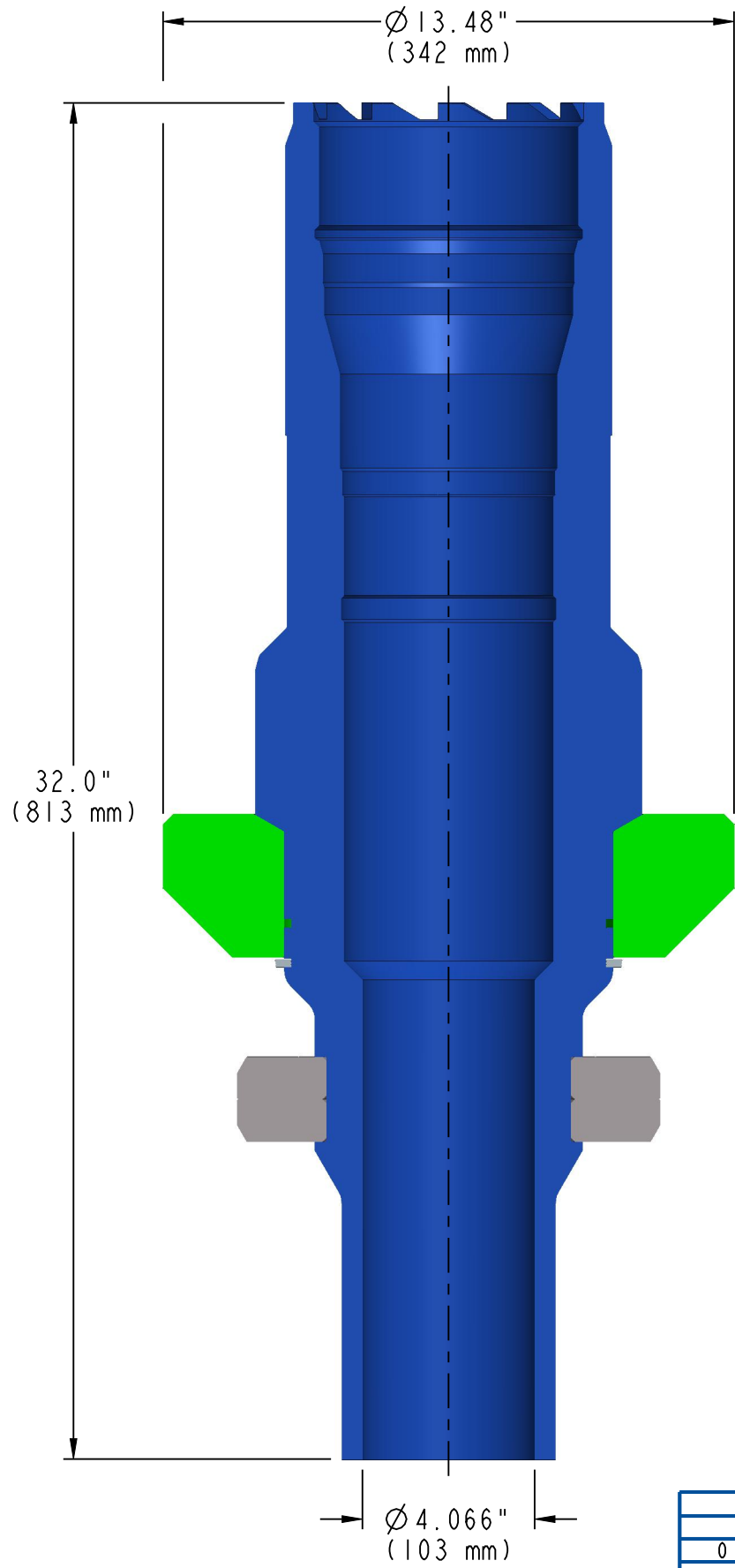


PART NUMBER 30201452 (LEGACY PN: WH-23118)	HEAT TREAT	MATERIAL		WEIGHT APPROX	YPF ARGENTINA CATALOG DRAWING 13" DMLX WELLHEAD SYSTEM 5" PRODUCTION MANDREL W563 21.4 LB/FT PIN BTM	DWG. No. RB-42891
		SPEC	DWG No	271 lbs		REV: 0
				SCALE 0.250		SHEET 1 OF 2

BILL OF MATERIALS			
ITEM	PART NUMBER	DESCRIPTION	QTY
10	30201452	STREAM-FLO CROWN CASING HANGER MANDREL (PRODUCTION STRING FOR 13-5/8 FOUR STRINGS SYSTEM) DMLX 13-5/8 NOMINAL X 6.250-4 STUB ACME-2G RH BOX TOP X 5 BLANK PREPARATION FOR TENARISHYDRIL WEDGE 563 (21.4 lb/ft) PIN BOTTOM 5 TYPE H BPV THREADS 7.70 DIAMETER X 6.00 EFFECTIVE LENGTH SLICK EXTENDED NECK WITH LOAD SHOULDER RING 4.06 BORE 32.00 LONG 125 ksi MINIMUM YIELD MATERIAL HANGER BODY API 6A UAA PSL-3 PRI *MAX LOAD 500000 lbs *TORQUE TOOL 30201449 *AXIAL LOAD CAPACITY NOT TO EXCEED RECOMMENDED CASING THREAD CAPACITY	1

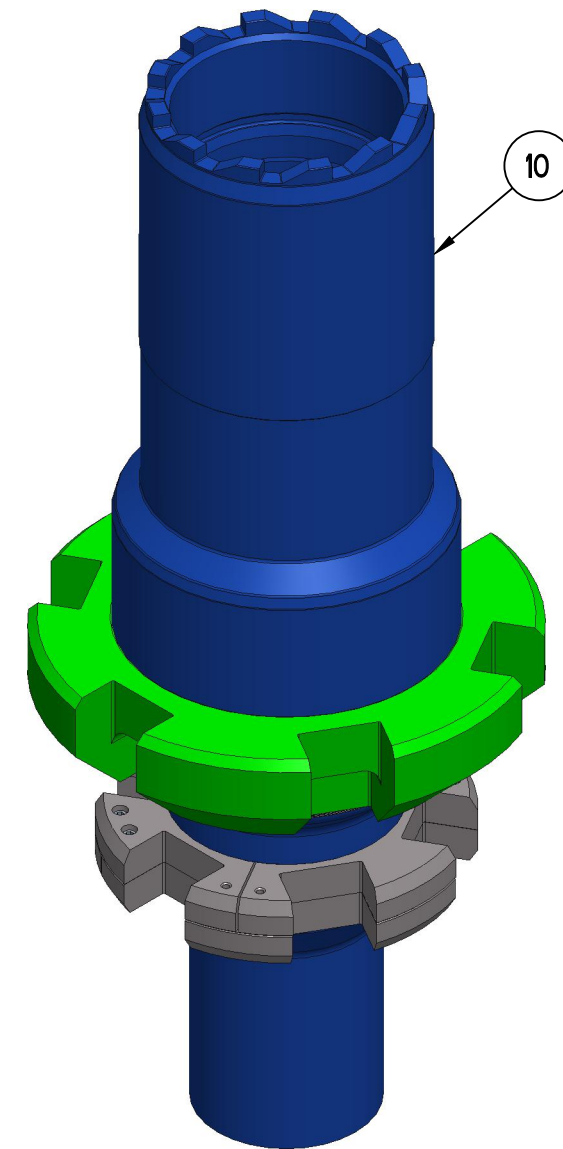
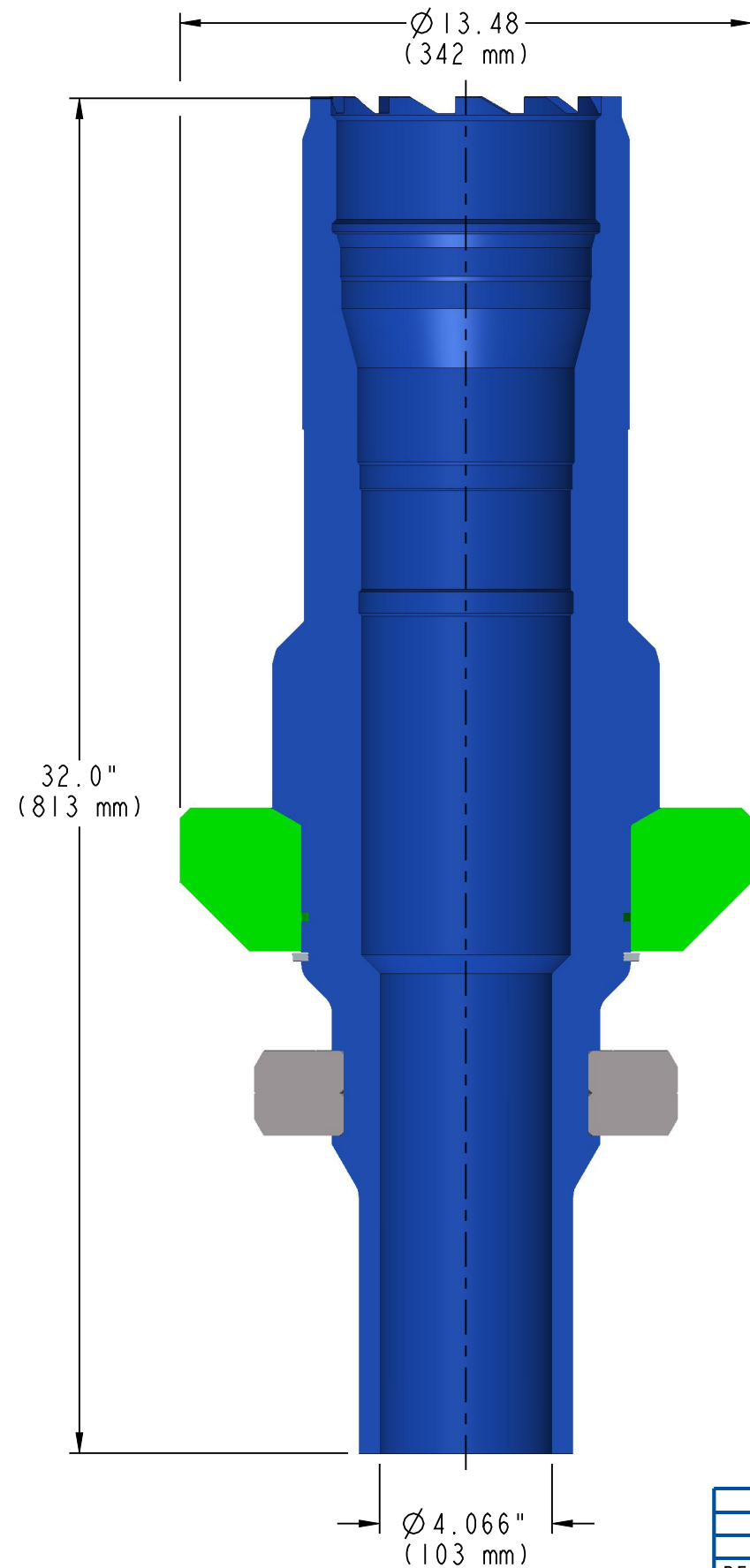


3D VIEW
SCALE 0.200

REV.	EC	BY	DATE	DWN.	AT	01-27-23	ALL DIMENSIONS IN INCHES UNLESS OTHERWISE NOTED: .X +/- .1 .XX +/- .02 .XXX +/- .005	ANGLE +/- 1/2° RAD II .05 T.I.R. .010	THIS DOCUMENT IS A PROPERTY OF STREAM-FLO INDUSTRIES LTD. AND NOT TO BE USED IN ANY WAY PREJUDICIAL TO THEIR INTERESTS. ALL PROPRIETARY RIGHTS RESERVED.	4505 - 74 AVE. EDMONTON, ALTA. CANADA
				CHCK.	VN	02-01-23				
				APPR.	RM	02-01-23				

PART NUMBER 30201452 (LEGACY PN: WH-23118)	HEAT TREAT	MATERIAL		WEIGHT APPROX	YPF ARGENTINA CATALOG DRAWING 13" DMLX WELLHEAD SYSTEM 5" PRODUCTION MANDREL W563 21.4 LB/FT PIN BTM	DWG. No. RB-42891
		SPEC	DWG No	271 lbs		REV: 0 SHEET 2 OF 2
				SCALE 0.250		

LISTA DE MATERIALES			
ARTICULO	NUMERO DE PARTE	DESCRIPCION	CANT.
10	30201452	COLGADOR DE CASING STREAM-FLO CROWN DMLX 13-5/8" NOMINAL CON PREPARACION CIEGA APTA PARA ROSCAR 5" TENARIS HYDRIL WEDGE 563 21,4# PIN INFERIOR Y ROSCA DE MANIOBRA 6,250-4 STUB ACME-2G RH PIN SUPERIOR; 7,70" DE Y CUELLO EXTENDIDO DE 6" DE LARGO. 4,06 BORE; MATERIAL 125 KSI FLUENCIA MINIMA. 500000 LBS DE CARGA MAXIMA ADMISIBLE * USE CON RT 30201449* API 6A U/AA/PSL-3/PR-1	1



3D VIEW
SCALE 0.200

DWN.	AT	01-27-23	ALL DIMENSIONS IN INCHES UNLESS OTHERWISE NOTED: .X +/- .1 250 .XX +/- .02 125 .XXX +/- .005 125	ANGLE +/- 1/2° RAO.1 .05 T.I.R. .010	
CHCK.	VN	02-01-23			
APPR.	RM	02-01-23			
REV.	EC	BY			DATE

THIS DOCUMENT IS A PROPERTY OF
STREAM-FLO INDUSTRIES LTD. AND
NOT TO BE USED IN ANY WAY
PREJUDICIAL TO THEIR INTERESTS.
ALL PROPRIETARY RIGHTS RESERVED.



4505 - 74 AVE.
EDMONTON, ALTA.
CANADA